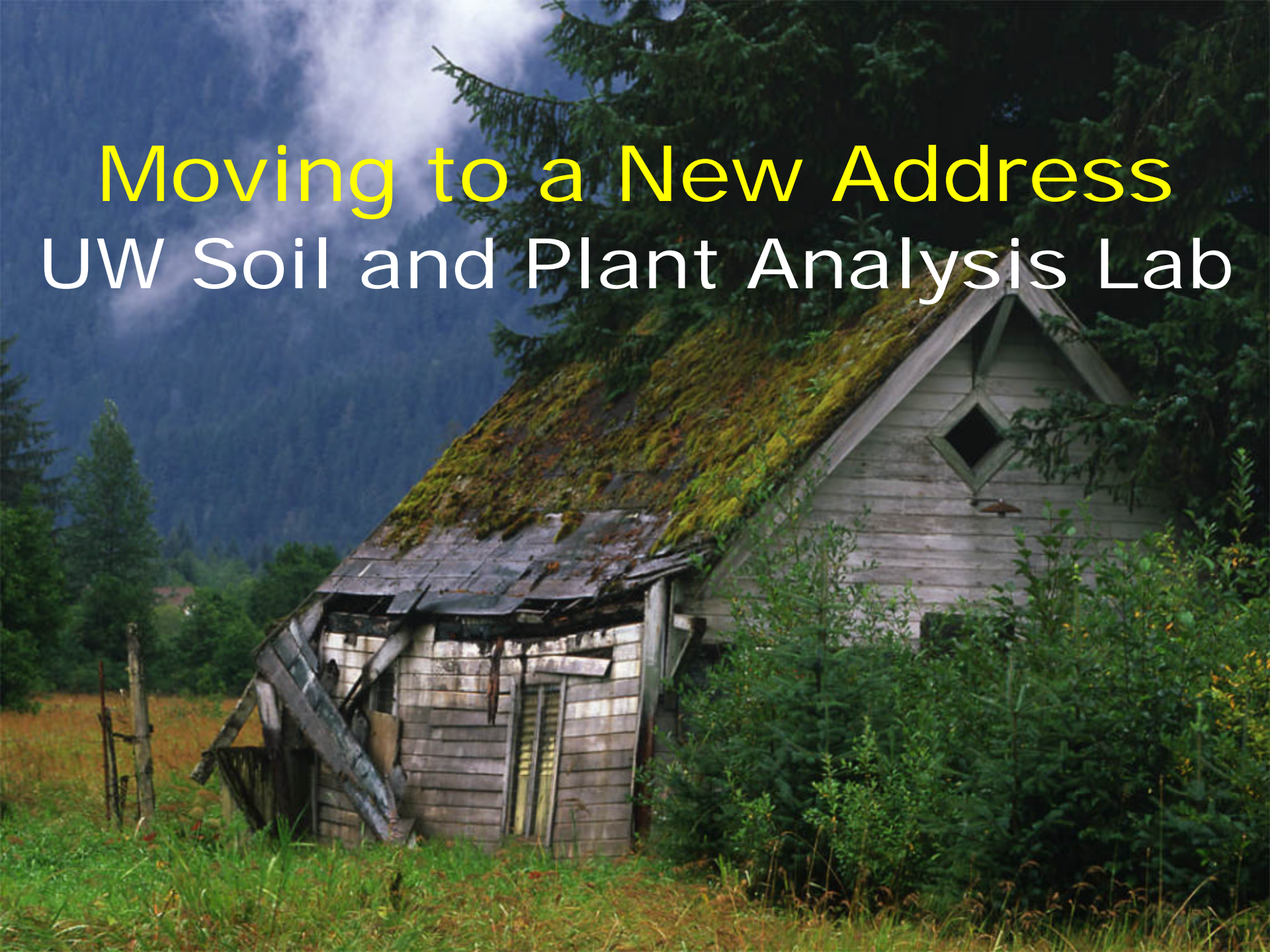


Moving to a New Address

UW Soil and Plant Analysis Lab





8452 Mineral Point Road

Laboratory Services

- Core services
 - routine diagnostic tests
 - 1913 legislative mandate
 - soil testing, education
- Adding specialty and customized analysis
 - agency certifications



7.4 FTEs

Analysts

Computer Specialist

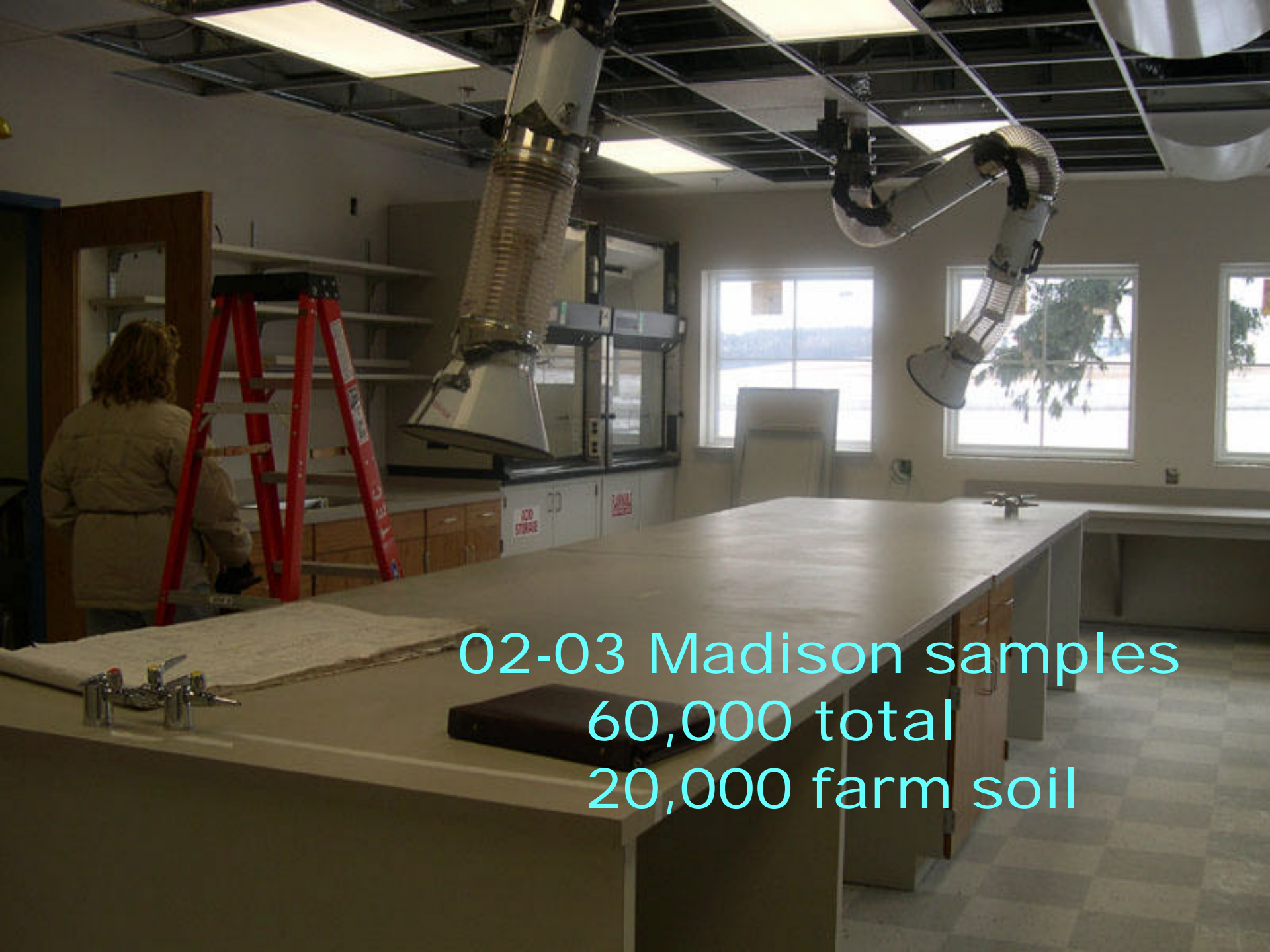
Clerical

Director, Manager

>130 yrs experience

Routine Farm Soil: Submit Electronically

- Input sample info via <http://uwlab.soils.wisc.edu>
- Print returned bar code
- Include bar code with samples
- Get up to \$50 credit for trying
- Volume discount after June 1



02-03 Madison samples
60,000 total
20,000 farm soil

New Specialty Services

- Organics and pesticide residues
- Soil water retention
- Customized analysis
 - on or off-site
 - method development
 - staff training

Organic Compounds and Pesticide Residues

- Organic acids, others
- Pesticide residues
 - organo-chlorine
 - carbamates
 - organo-phosphates
- Solution or whole sample

Soil Water Retention

- Wet range water retention
 - intact core 'sampling kit'
- Bulk density
- Saturated hydraulic conductivity
- Calculated porosity

Customized Analysis

- Project-based
 - modify or develop new lab protocols
 - in-lab or selected off-site analysis
 - staff training
- Highly experienced staff
- Per sample and/or hourly fee



UW Soil & Plant Analysis Laboratory

Open House
March

<http://uwlabs.soils.wisc.edu>