

Using the Internet as a Dealer Information Source

Wisconsin Sites

Web Searching Hints

+

-

“ “

Or

Document searches

.pdf, .doc

Web Searching Hints

- **Check for Authoritative Information**
 - Know your source
 - Author
 - location
 - Institution/company
 - Date
- **Know what/where you are searching**

Search Engines

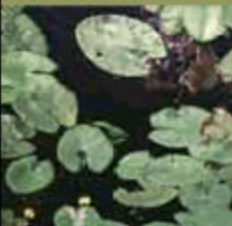
- **Not all search engines are the same**
 - AlltheWeb, AltaVista, Google, Lycos, MSN, Yahoo, etc.
- **Know Strengths and Weaknesses**
 - Type of files searched
 - .pdf, .doc, .xls, .ppt
 - Searchable Databases
 - Case sensitivity

Search Engine Review

- *Greg R. Notess*
 - *reference librarian at Montana State University and founder of SearchEngineShowdown.com.*

UW Extension Cooperative Extension

[Educational Programs](#)
[County Offices](#)
[Publications](#)
[News Releases](#)
[Distance Education](#)
[Employment](#)
[Related Sites](#)



For our employees

[Administration](#)
[District Offices](#)
[Human Resources](#)
[Calendars and Conferences](#)
[Committees](#)
[Staff Directory](#)
[Program Support](#)
[Planning & Results](#)

[Updates from](#)

[SEARCH](#) | [SITE INDEX](#) | [ABOUT COOPERATIVE EXTENSION](#) | [HOME](#) | [UW/EX HOME](#)

Bringing University research to the people of Wisconsin

January 15, 2003

Solutions for winter window condensation

If Jack Frost is getting a little too friendly this winter by bringing ice and water inside your windows, a University of Wisconsin-Extension housing specialist has some tips for you to solve this common problem.

[Find out more...](#)

Search and Screen Information for Dean and Director Available on the Web

Chancellor Kevin Reilly has identified the search-and-screen committee that will make recommendations to him as he selects a new Cooperative Extension Dean and Director. [Denise Retzleff](#), 4-H Youth Development educator in Fond du Lac County and immediate past chair of the University Committee, has agreed to chair this group. The goal is to have a new Dean and Director in place by July 1.

For more information on the search-and-screen process, including a roster of the search-and-screen committee, a full position description and a preliminary timeline for the hiring process, please see <http://www1.uwex.edu/deansearch/>. To view the October 15 announcement of Carl's new assignment, see

University of Wisconsin-Madison - Microsoft Internet Explorer

File Edit View Favorites Tools Help

Back Forward Stop Home Search Favorites History Print Copy Paste Address http://www.wisc.edu/ Go

Links Best of the Web Channel Guide Customize Links Free Hotmail Internet Start Is Your Operating System Genuine Microsoft

Search x New »

cn

Please

Search

THE UNIVERSITY OF WISCONSIN-MADISON

UW SEARCH MY UW QUICK LINKS

TIMETABLE EASI DIRECTORIES EMPLOYMENT HELP


THE UNIVERSITY
of
WISCONSIN
MADISON

News & Events
[Events calendar](#)

Research
[Ongoing study checks in on 'Happy Days' cohort](#)

On Campus
[Wonders of Physics celebrates 20 years](#)

['King of Latin jazz' returns to Union Theater](#)

[More news](#)


About UW-Madison
Chancellor's page, visiting campus, university relations, alumni, making a gift and [more](#)


Admissions
Undergraduate, graduate and professional programs, housing, financial aid and [more](#)

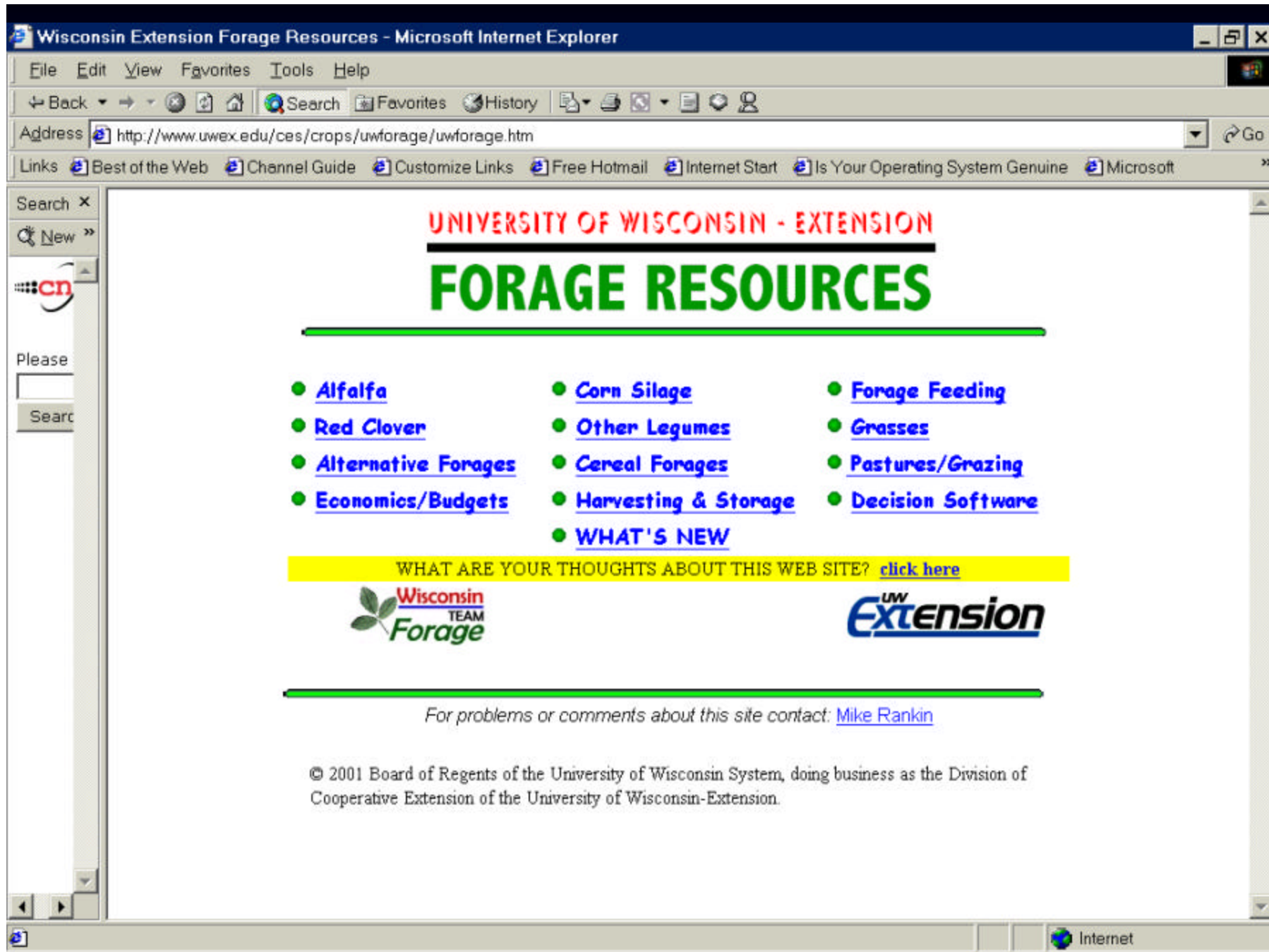

Academics & Research
Schools, colleges, departments, advising, libraries, centers, research, grants and [more](#)


Students
Resources, My UW, student organizations, Wisconsin Union, housing and [more](#)

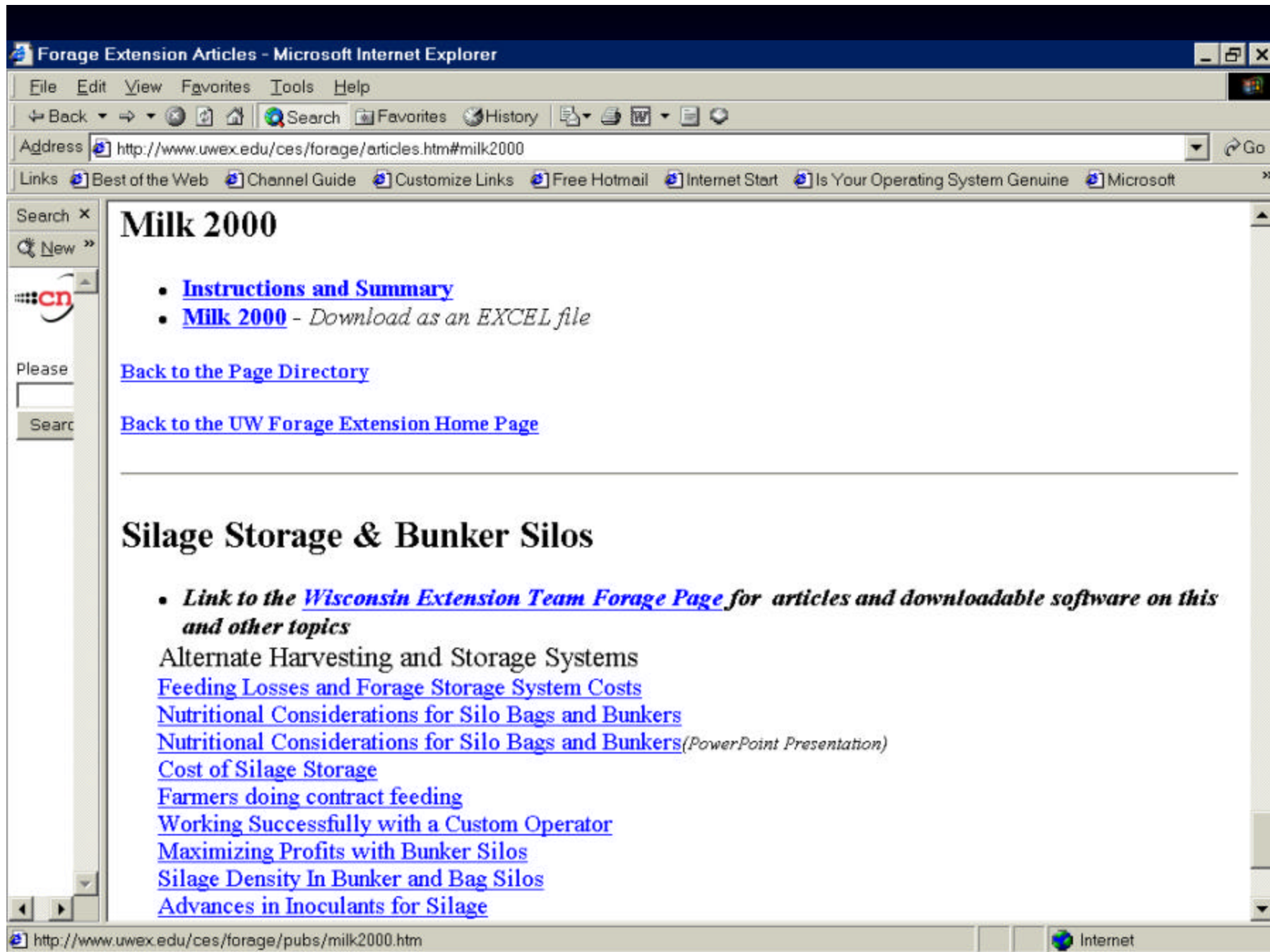

Faculty & Staff
Administration, employee services, instructional resources, research and [more](#)


Community & Outreach
Community partnerships, continuing

Internet







Search X

New >>



Please

Search

Integrated Pest & Crop Management

[Home](#) | [Contacts](#) | [Search](#)

Pest and Crop Management

This web site provides information for and about Wisconsin's agricultural community. Several University of Wisconsin outreach programs share this site.



Water Quality & Environment

Nutrient and pest management for crops with regard to water quality and farm profitability - UW NPM program



On the Farm

Integrated Pest Management practices - UW IPM program

[UW Weed Science](#)

[PAT](#)

[Eco-Potato project](#)

[Crop Manager](#)

[Other Links](#)

Pesticide Applicator Training -

UW PAT program

Current news articles

- [Check our Calendar of Upcoming Events \[View\]](#)
- [Information about the new NPM 2003 Calendar \[View\]](#)
- [Dietary Phosphorus Considerations in Dairy Management \[View\]](#)



PAT Program - home - Microsoft Internet Explorer

File Edit View Favorites Tools Help

Back Forward Stop Reload Home Search Favorites History Print Copy Paste Address Links

Search X

New >>

cn

Please

Search

WISCONSIN PESTICIDE APPLICATOR TRAINING

[PAT program](#) [guide](#) [applicator types](#) [training](#) [certification & exams](#) [home pest project](#) [other info](#)

[SEARCH](#) | [SITEMAP](#) | [CONTACT](#)

Welcome

Welcome to the University of Wisconsin-Extension's Pesticide Applicator Training program.

Now you can [register on-line](#) for training materials.

We Provide:

- Manuals and other materials for training you to become a Wisconsin-certified pesticide applicator
- Fact sheets to help you comply with complicated pesticide regulations
- Brochures to help you learn about pesticide safety for your home and school

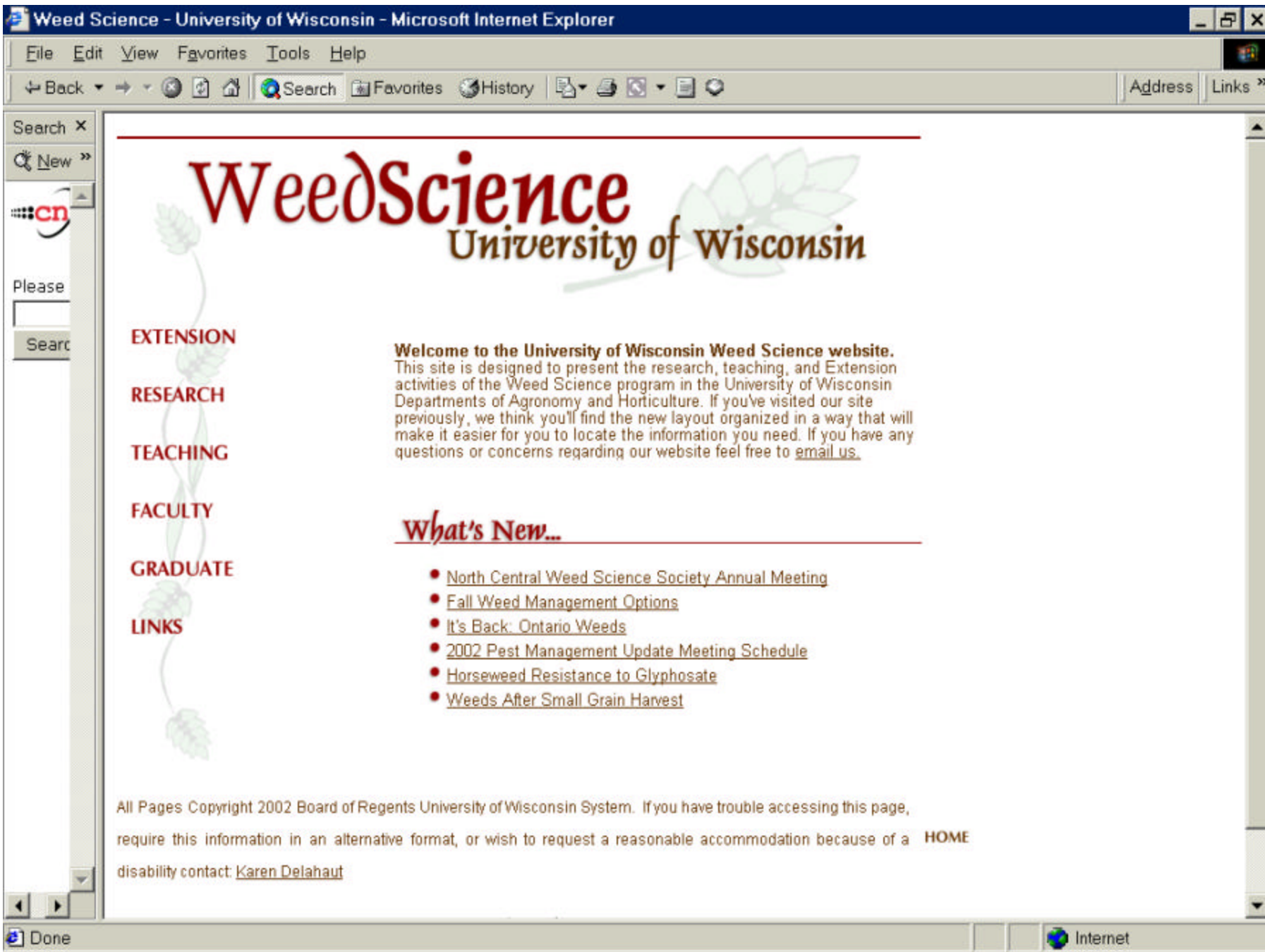
See [What's New](#) including:

- 2003 commercial applicator training session schedule.
- [On-line registration](#) for training materials and live training sessions.
- [CD tutorial](#) for Homeowners.
- New training materials.

Our Web site:

[Guide](#): Find out who we are and what we do.

Internet



Search X

New >>



Please

Search

WeedScience

University of Wisconsin

EXTENSION

RESEARCH

TEACHING

FACULTY

GRADUATE

LINKS

Welcome to the University of Wisconsin Weed Science website.

This site is designed to present the research, teaching, and Extension activities of the Weed Science program in the University of Wisconsin Departments of Agronomy and Horticulture. If you've visited our site previously, we think you'll find the new layout organized in a way that will make it easier for you to locate the information you need. If you have any questions or concerns regarding our website feel free to [email us](#).

What's New...

- [North Central Weed Science Society Annual Meeting](#)
- [Fall Weed Management Options](#)
- [It's Back: Ontario Weeds](#)
- [2002 Pest Management Update Meeting Schedule](#)
- [Horseweed Resistance to Glyphosate](#)
- [Weeds After Small Grain Harvest](#)

All Pages Copyright 2002 Board of Regents University of Wisconsin System. If you have trouble accessing this page, require this information in an alternative format, or wish to request a reasonable accommodation because of a disability contact: [Karen Delahaut](#) [HOME](#)



Search X

New »



Please

Search

Crop Scouting Manuals

VEGETABLE CROP SCOUTING MANUAL

This manual is available in a user-friendly web format!

- [Vegetable Crop Scouting Manual Web Site](#)

FIELD CROP SCOUTING MANUAL

The files listed below contain the Vegetable Crop Scouting Manual and the chapters of the Field Crop Scouting Manual, which are both currently used for the University of Wisconsin Crop Scouting Short Course. Please note that the printed and bound versions of the manuals also contain several pre-printed bulletins (see the Table of Contents for each chapter for the titles). All chapter files are in Adobe Acrobat (.pdf) format.

- [Intro](#) [70K]
- [Alfalfa](#) [600K]
- [Field Corn](#) [1 Meg]
- [Soybean](#) [400K]
- [Wheat](#) [250K]
- [Soil Fertility](#) [1.7 Megs]
- [Weed Guide](#) [3.2 Megs]
- [Herbicide Injury Guide](#) [80K]

Back to the [JPCM HOMEPAGE](#).

For information about the Crop Scouting Manuals' content and creation, email [Bryan Jensen](#).

This page was updated by T. Thiede on 3/2/2001.

Craig Deas, Bryan Janssen, Scott Myers, & John Vothman

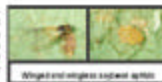
© 2004 Blackwell Publishing Ltd *Journal of Internal Medicine* 255: 105–112

References

The soybean aphid (*Aphis glycines*) is a recently introduced pest of soybean. Although this aphid was first discovered in July 2000, it probably was present in the Midwest for 2-3 years prior to that but at levels that were too low to detect. It is not known how the aphid was introduced but its current North American geographical range includes the Midwest states and Ontario, Canada. Previously it had been found in China, Japan and Australia.

Identification

Spinyhorn aphids are small (approximately $\frac{1}{16}$ inch long) soft-bodied insects, and may be winged or wingless. They are light yellow in color early in the growing season and are concentrated on leaves, petioles and stems at the top of the plant. Winged adults will have a black head and thorax. By mid-August the aphids that are produced will be lighter in color and will be located on the undersides of lower leaves.



Life Cycle

Life cycle. *Scytobius* (*Afferus* spp.) is the only known overwintering host, and as is true of other aphids in the terpene zones, the aphid can survive winter only on the egg stage. The egg is very winter hardy and can survive prolonged periods of very low temperatures. Scytobius aphids will hatch in the spring and go through two to three generations of wingless females before a winged generation leaves the overwintering host in search of subgenus. Numerous generations of wingless females will develop on scytobies before a winged generation of females and males migrate back to buckthorn in late summer/early fall to mate and produce eggs.

Demise

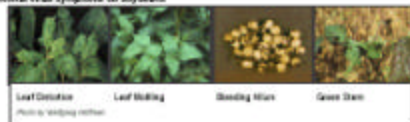
Stinkbugs cause damage by sucking plant sap and by leaving the feeding process. Although experience with the insect symptoms of direct feeding damage may include plant and seed counts, puckering and yellowing of leaves. When including nutrient deficiencies, they intensify these symptoms. Some a sugary substance called honeydew while they are aphid populations are heavy, the plants will be coated with a turn black as a result of sooty mold growing on the honeydew droplets and contribute to wilting.



Additionally, soybean aphids are capable of transmitting several important viruses, including alfalfa mosaic, soybean mosaic and bean yellow mosaic. These viruses commonly occur together and form a complex. Although plants may be infected early in the season, later symptoms caused by viruses usually are most apparent by late vegetative or early reproductive stages. Symptoms are frequently associated with specific fields and not all fields in a region. Symptomatic plants are associated with reduced grain populations or slow developing crop canopies. The incidence of symptomatic plants commonly progresses inward from edges of fields. Symptoms may also be distributed in fields either

single plants or clusters are rare. The pattern of mycelium plants in the field depends on specific weeds present and aphid activity. General symptoms of ergleng virus include plant stunting, leaf distortion and mottling, reduce and/or uneven seed distribution. Infected weeds is the most important source of virus. The virus is transmitted by aphids, but also by pollen. The virus is not a significant source of infection for alfalfa, meadow mix. Seed transmission is extremely important for ergleng virus because the virus is seldom found in plants other than ergleng. Thus there is no reason to think that seed sources are accurate the virus detected in ergleng. Seed sources are also important for ergleng virus because the virus is transmitted by pollen. The virus is not a source of infection and migrates into ergleng fields and seedling activity results in virus transmission. Estimates for measuring the ergleng virus are becoming less important in the Far North District. It is necessary to determine specific symptoms caused by each virus, the extent of yield and seed quality loss caused by each virus and management practices to reduce risks associated with the insecticide.

General virus symptoms are as follows:



Scouting Suggestions

that each checking account balance and continue to estimate total turnover at month intervals until

Yield Loss Potential

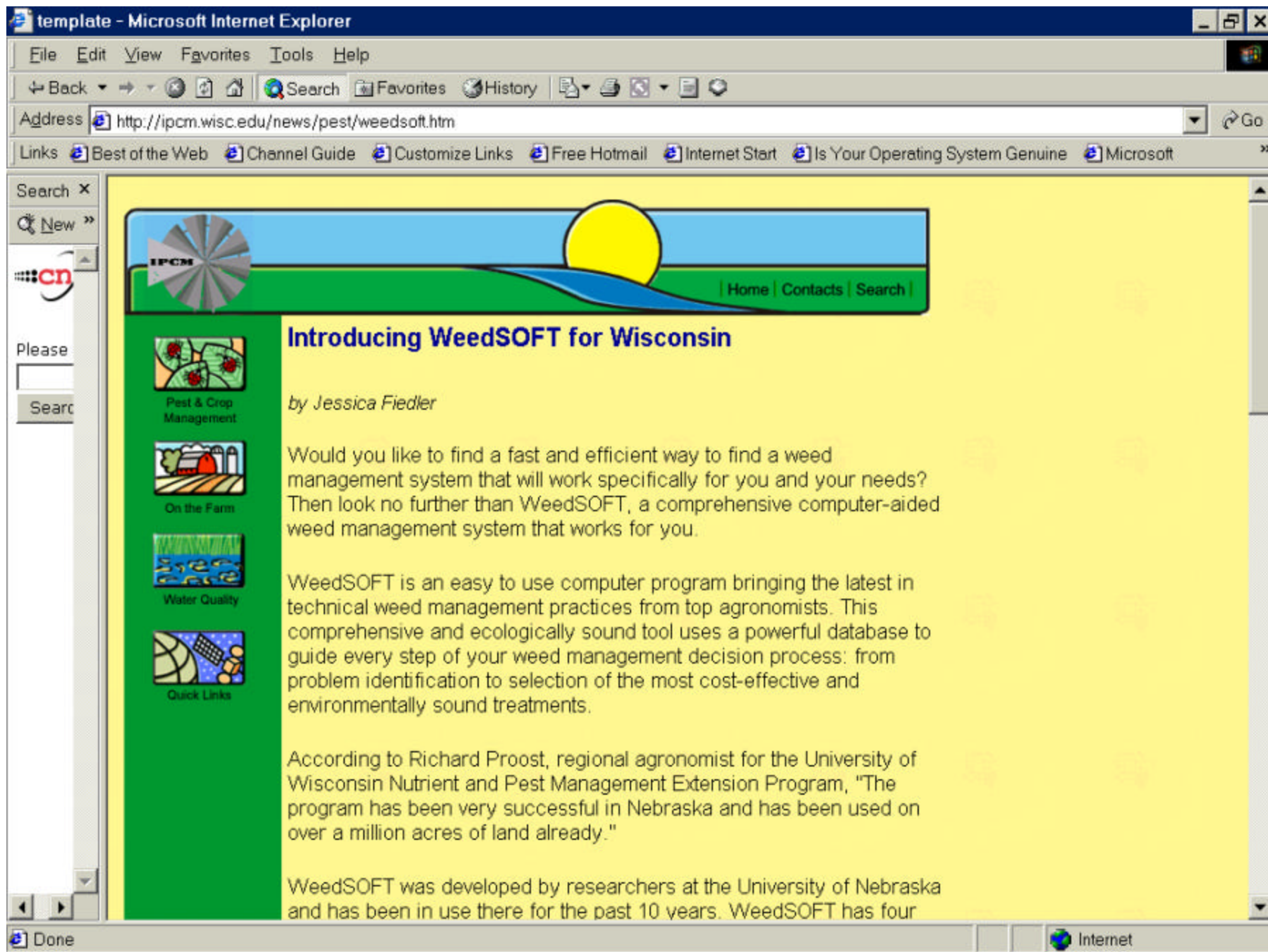
Yield Loss Potential
Yield loss caused by the soybean aphid is variable and can be influenced by many factors including aphid numbers, virus transmission, weather, natural enemies, and variety selection. A comparison of University of Wisconsin research trials show a range of yield loss from 0 to 10 bushels/acre. Similarly, a survey of side-by-side insecticide plots in on-farm trials conducted during 2007 show a yield gain of 0-17 bushels/acre in treated fields.

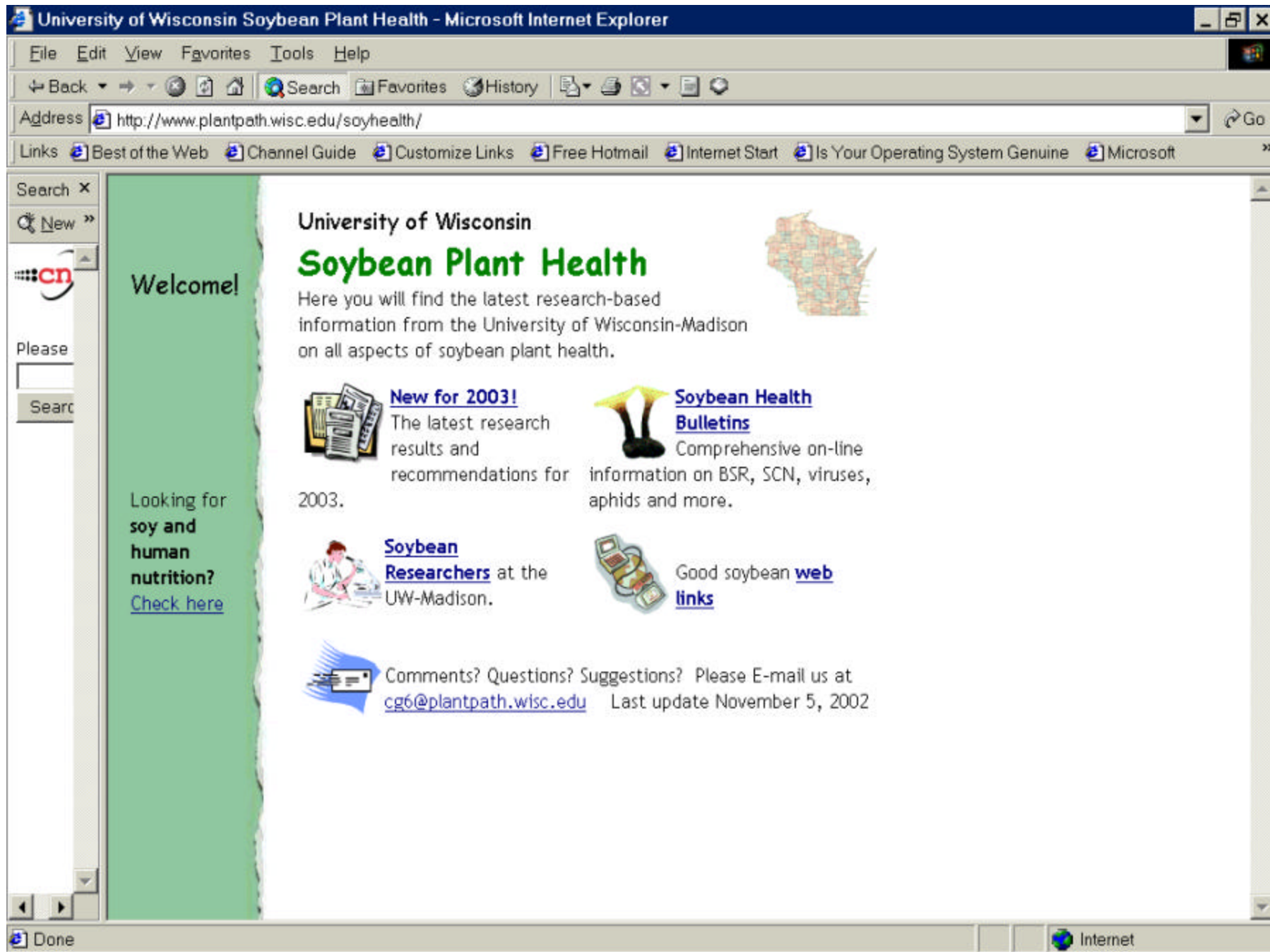
Ecogenic Threshold and Spray Timing Issues

Abstract. Economic thresholds and spring timing recommendations for soybean, economic threshold and control practices are developed for every growing season that include a range of environments, growing practices, varieties and control methods. However, University of Wisconsin research on soybean aphids is limited to the results from the 2001 growing season, and therefore should be used only as a guideline. After a review of eleven economic threshold and spring timing studies the following recommendation is suggested. However, growers and crop advisors are advised to discuss control with recent University of Wisconsin research results.

The need for insecticide application centers on the average number of aphid/plant, crop growth stage/time of year. Research results in 2001 show a field average of greater than 200 aphid/plant during the most susceptible crop stages of R2-R4 produce a yield reduction of approximately 8 bushels/acre. This yield loss when compared with chemical and application costs, selling price as well as injury from ground application would be near or above the break-even point of an insecticide application.

Remarkable yield loss must also be considered before looking for soybean aphids. Field observations from 2000 and 2001 show that soybean aphid populations will level off, if not rapidly decline by early to mid-August. Many reasons exist for this sudden decline in aphid populations. For example, reduced food quality as a result of aphid feeding and high aphid numbers can lead to a generation of starved nymphs, which develop into winged adults and leave the field in a few days. Starved nymphs have wing pads (see photograph) and therefore are







Soybean Education Resources - Microsoft Internet Explorer

File Edit View Favorites Tools Help

Back Forward Stop Reload Home Search Favorites History Print Copy Paste

Address <http://soybean.agronomy.wisc.edu/education.htm> Go

Links Best of the Web Channel Guide Customize Links Free Hotmail Internet Start Is Your Operating System Genuine Microsoft

Search X

New »

cn

Please

Search

Education Resources

University of Wisconsin-Madison — College of Agricultural & Life Sciences

Up Soybean Image Library Specialty Soybean Crop Budgeting FFA Agronomy Production Stats

Web Resources

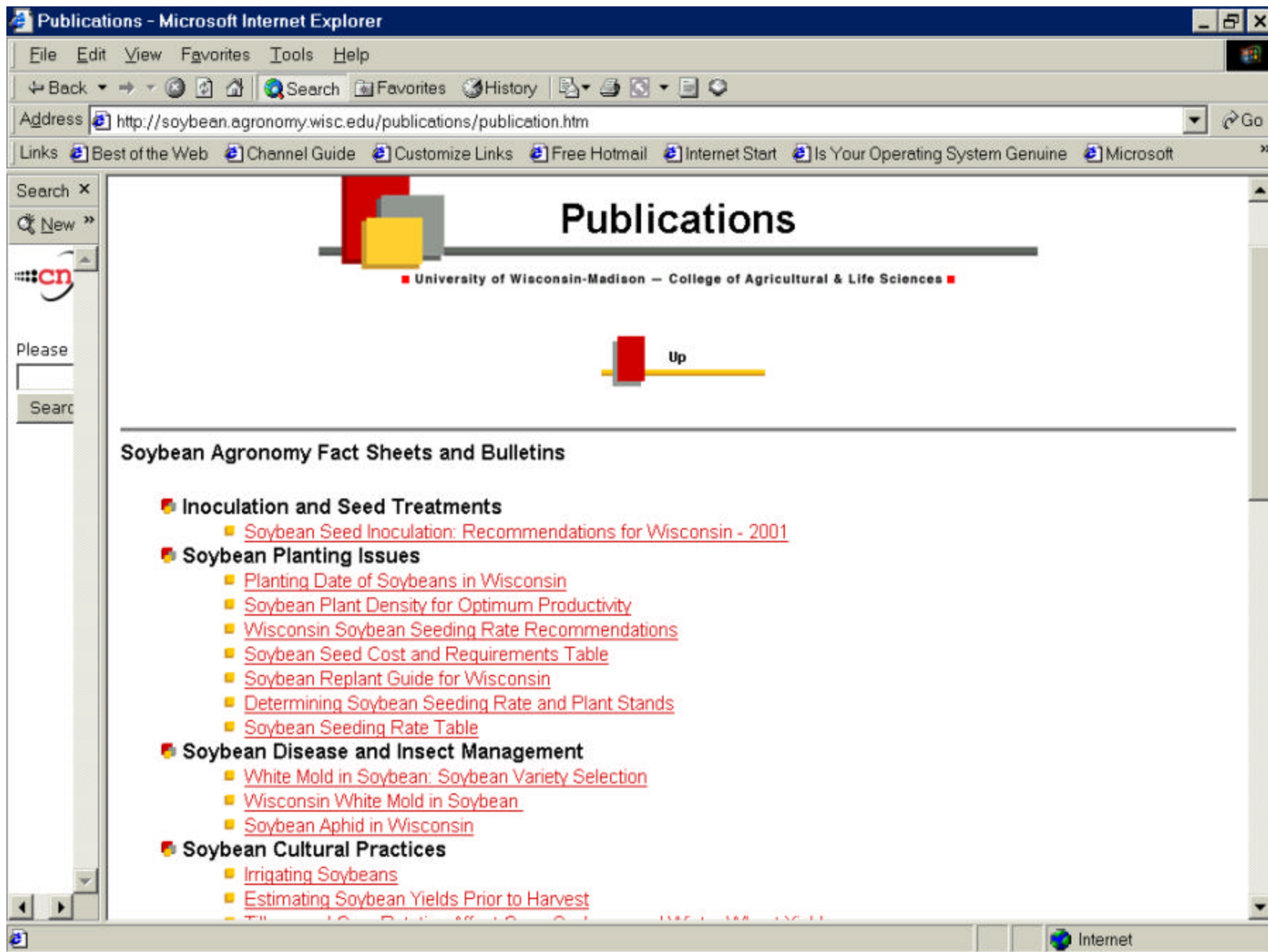
For a list of our publications click [here](#).

Presentations from Recent Agronomy Programs

2002

- ["Does International Soybean Production Affect Opportunities in Wisconsin?"](#)
2002 Area Soybean Conferences. December 16-19, 2002.
[Powerpoint download](#) (caution-very large)
- ["Test Plots to Test Strips-Soybean Variety Selection for Your Farm"](#)
2002 Area Soybean Conferences. December 16-19, 2002.
[Powerpoint download](#) (caution-very large)
- ["Impact of Cultural Practices on Soybean Aphid Incidence, Soybean Yield, and Virus Incidence"](#)
2002 Fertilizer, Agronomy, and Pest Management Conference, Madison, WI Jan. 15-17, 2002
[PowerPoint download](#)

http://soybean.agronomy.wisc.edu/education/specialty_soybean.htm Internet



Wisconsin Corn Agronomy - Microsoft Internet Explorer

File Edit View Favorites Tools Help

Back Forward Stop Reload Home Search Favorites History Print Copy Paste Address http://corn.agronomy.wisc.edu/ Go

Links Best of the Web Channel Guide Customize Links Free Hotmail Internet Start Is Your Operating System Genuine Microsoft

Search X
New »
cn
Please
Search



Wisconsin Corn Agronomy

[Home](#) | [Research](#) | [Extension](#) | [Publications](#) | [Software](#) | [Short-Course](#) [Home Page](#)

2003 Season Updates

[Looking Back on Corn Production in 2002 January 15, 2003](#)

Highlighted UWEX Websites

[Distance Diagnostics](#)
[Corn Silage Dry-Down in WI](#)

Teaching Materials

[PowerPoint Library](#)

Wisconsin Corn Hybrid Trial Results

[2002 - Adobe pdf version](#)
[2002 - MS Excel version](#)
[2002 - Cover](#)
[2002|2001|2000|](#)
[1999|1998|1997|1996](#)
[1995|1994|1993|1992|1991|1990](#)

Welcome to the Wisconsin Corn Agronomy home page.

Our mission is to develop relevant corn management education programs that address the needs of Wisconsin corn farmers.

Search for:

Start Search

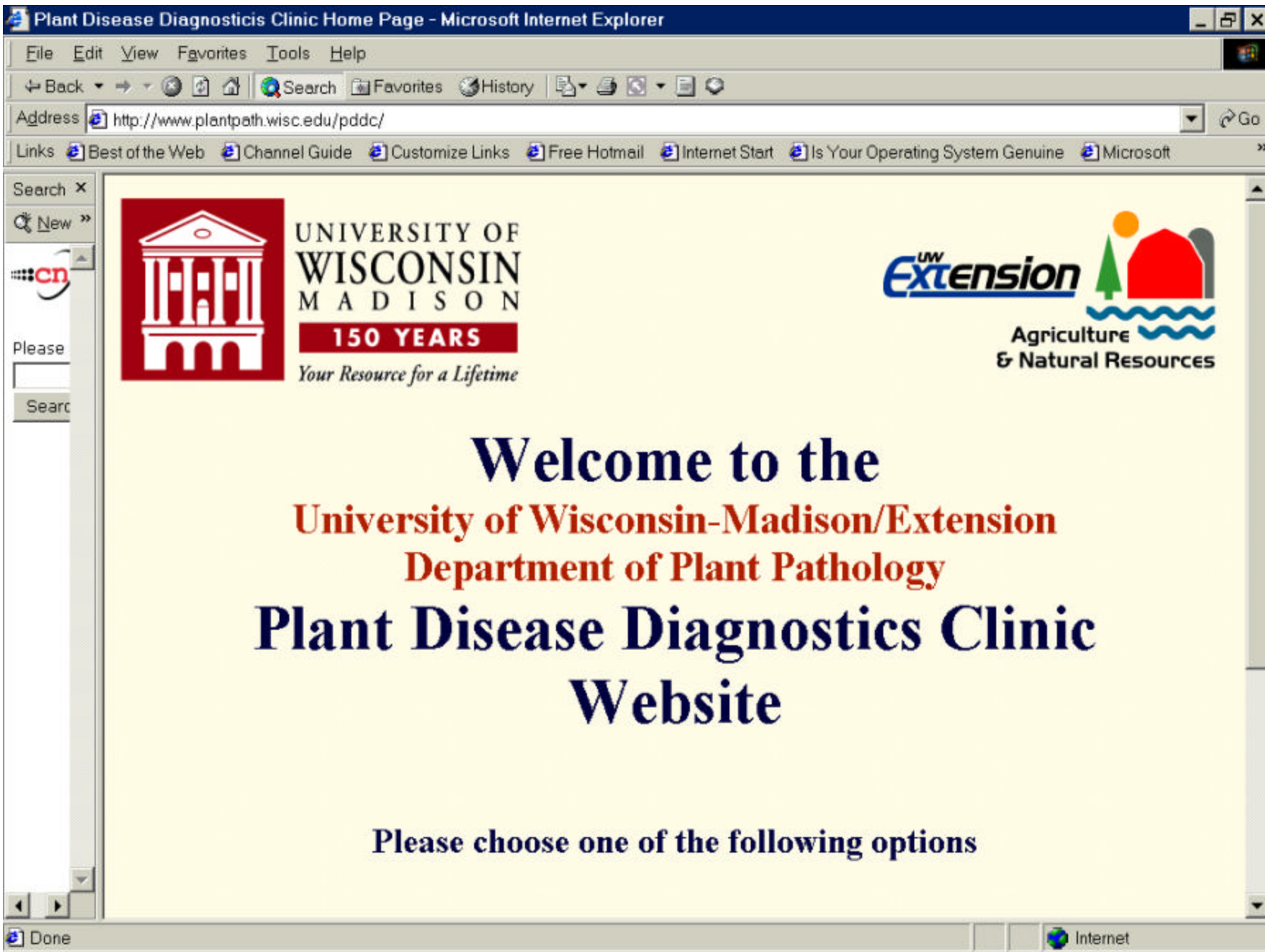
Reset

[List of participating states](#)



[PEPS](#) [2001 Results](#) [Winners](#)

Done Internet





Publications

Disease Almanac

Educational Materials

UW-Madison Entomology Department – Insect Diagnostic Lab Highlights - Microsoft Internet Explorer

File Edit View Favorites Tools Help

Back Forward Stop Reload Home Search Favorites History Print Mail News RSS

Address http://www.entomology.wisc.edu/top

Links Best of the Web Channel Guide Customize Links Free Hotmail Internet Start Is Your Operating System Genuine Microsoft

Search x

New »

cn

Please

Search

Done


Internet

UW-Madison Department of Entomology

Insect Diagnostic Lab

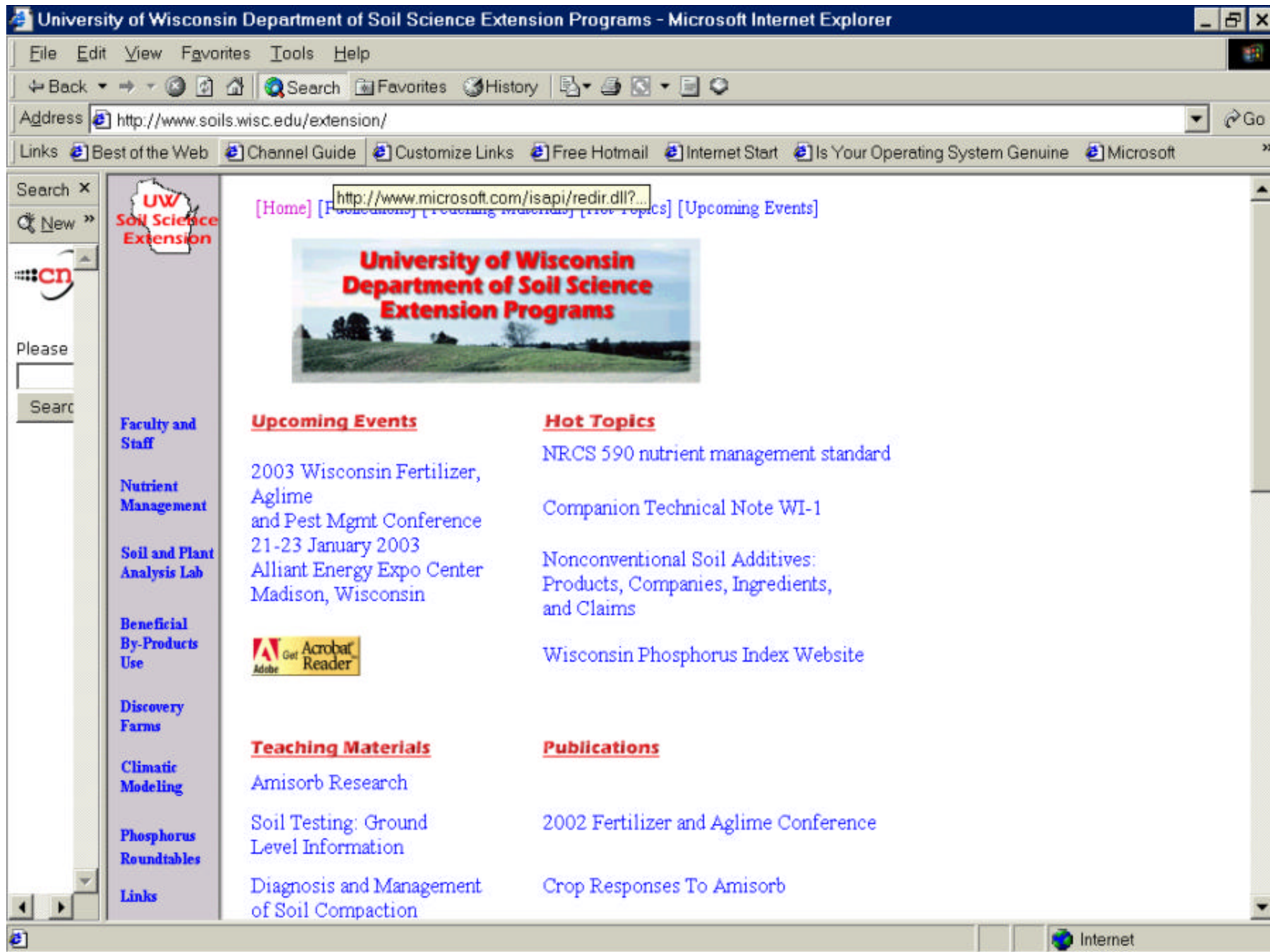
- About the Lab
- How to Submit Samples
- Extension Bulletins
- Tools for Educational Programs
- Insect Highlights

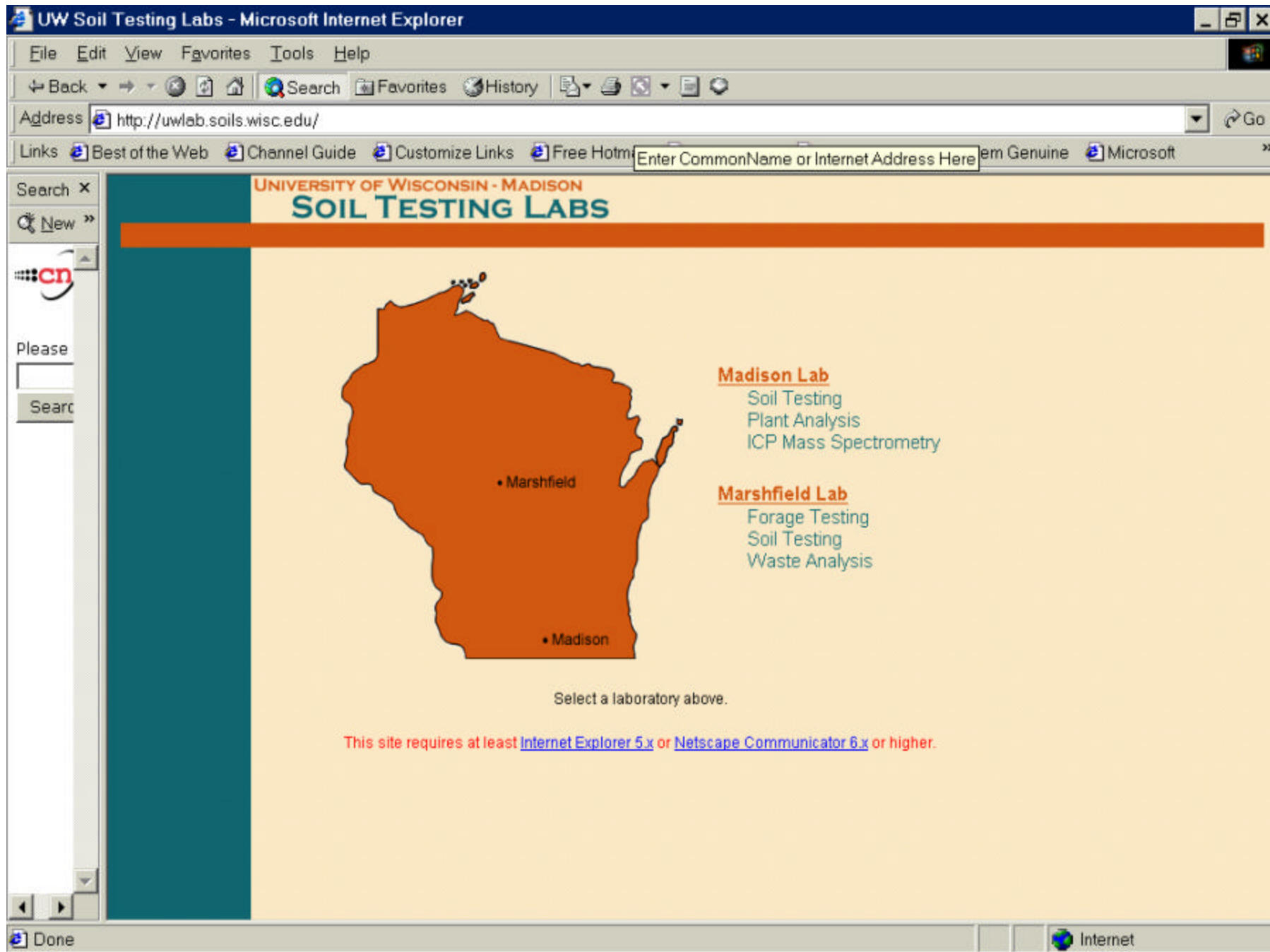
For the week of ... Go!

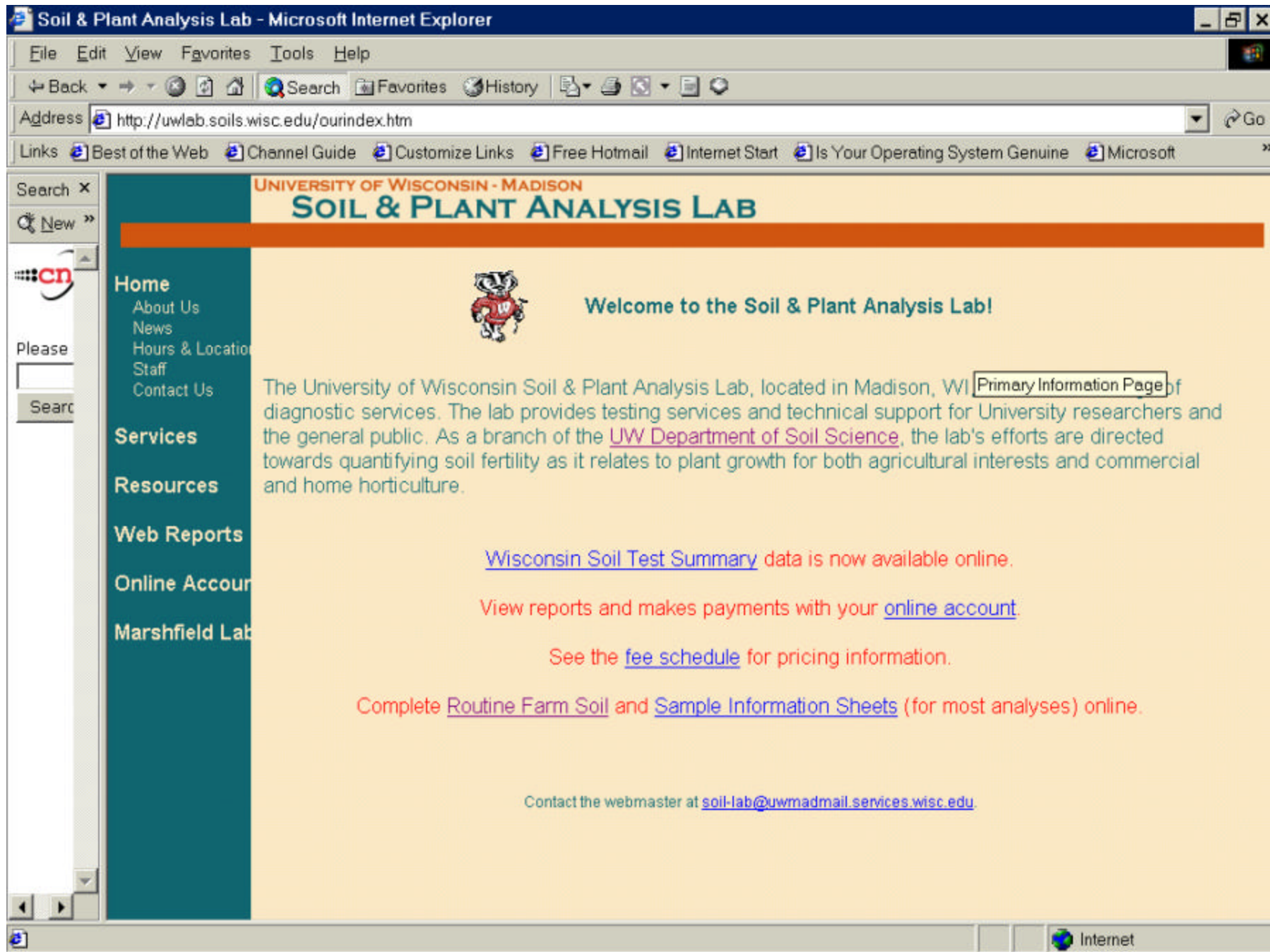


About the Lab

The Insect Diagnostic Lab was established in 1978 to identify insects and insect damaged plant material from around the state. Primary service is to the county extension offices and commercial







Soil & Plant Analysis Lab - Microsoft Internet Explorer

File Edit View Favorites Tools Help

Back Forward Stop Reload Home Search Favorites History Print Copy Paste Address <http://uwlab.soils.wisc.edu/ourindex.htm> Go

Links Best of the Web Channel Guide Customize Links Free Hotmail Internet Start Is Your Operating System Genuine Microsoft

Search X New

Home About Us News Hours & Location Staff Contact Us

Services

Resources

Web Reports

Online Accounts

Marshfield Lab

Bookmarks

Thumbnails

UNIVERSITY OF WISCONSIN - MADISON
SOIL & PLANT ANALYSIS LAB

Viewing

The Soil and Plant Analysis Laboratory, UW-Madison / Extension

Vol. 1, No. 1 April 2002

Welcome to the first issue of The Spectrum. The **SPECTRUM**, a newsletter published by the Soil and Plant Analysis Laboratory (SPAL), Dept. of Soil Science, UW-Madison is designed to introduce analytical services and other related information to current and potential users. SPAL has a long history of providing agronomic diagnostic testing to support crop production decisions. However, an increasing component of services is becoming dedicated to supporting research needs. These services will hopefully become part of your current and/or future research program. Read on to find out more about bar coding for research samples submitted to SPAL and the ways you can use instruments in the shared instrument program of SPAL and the Soil Science Department. The next issue of the newsletter will appear at the beginning of June, 2002 featuring the instrumentation and analytical capabilities of SPAL.

In this issue

- Bar coding for research samples
- Shared instrument users group meeting
- Shared Instruments: Types/capabilities, user fees and future

Bar coding for research samples

Researchers will be able to electronically submit information after April 22 at <http://uwlab.soils.wisc.edu> for sample analysis at the UW Soil and Plant Analysis Lab. A bar code will be generated for your sample set after entering the requested information about sample type/number, sample identification and tests requested. This bar code will be scanned at the lab when the samples are received, creating an unique sample identification to be retained and available on the report. Results can be e-mailed or sent on a disk if requested. Hardcopy will follow the electronic reports. Contact Sherry Corbis scorbis@uwlab.soils.wisc.edu or Carlos Tarazona ctarzo@cs.wisc.edu for further information.

Shared instrument user's group meeting

A bi-monthly group meeting for users and staff of the shared instruments is offered to exchange experience and knowledge. It is held at the UW-Madison Soil and Plant Analysis Laboratory.

• Hewlett Packard Gas Chromatograph/Mass Spectrometer. Identification and/or determination of pesticides and other organics in soil and water extracts. Can match unknowns

1 of 4 8.5 x 11 in

Internet

WI-MN Cooperative Extension Agricultural Weather - Microsoft Internet Explorer

File Edit View Favorites Tools Help

Back Forward Stop Reload Home Search Favorites History Print Copy Paste Address http://www.soils.wisc.edu/wimnext/ Go

Links Best of the Web Channel Guide Customize Links Free Hotmail Internet Start Is Your Operating System Genuine Microsoft

Search X
New »
cn
Please
Search

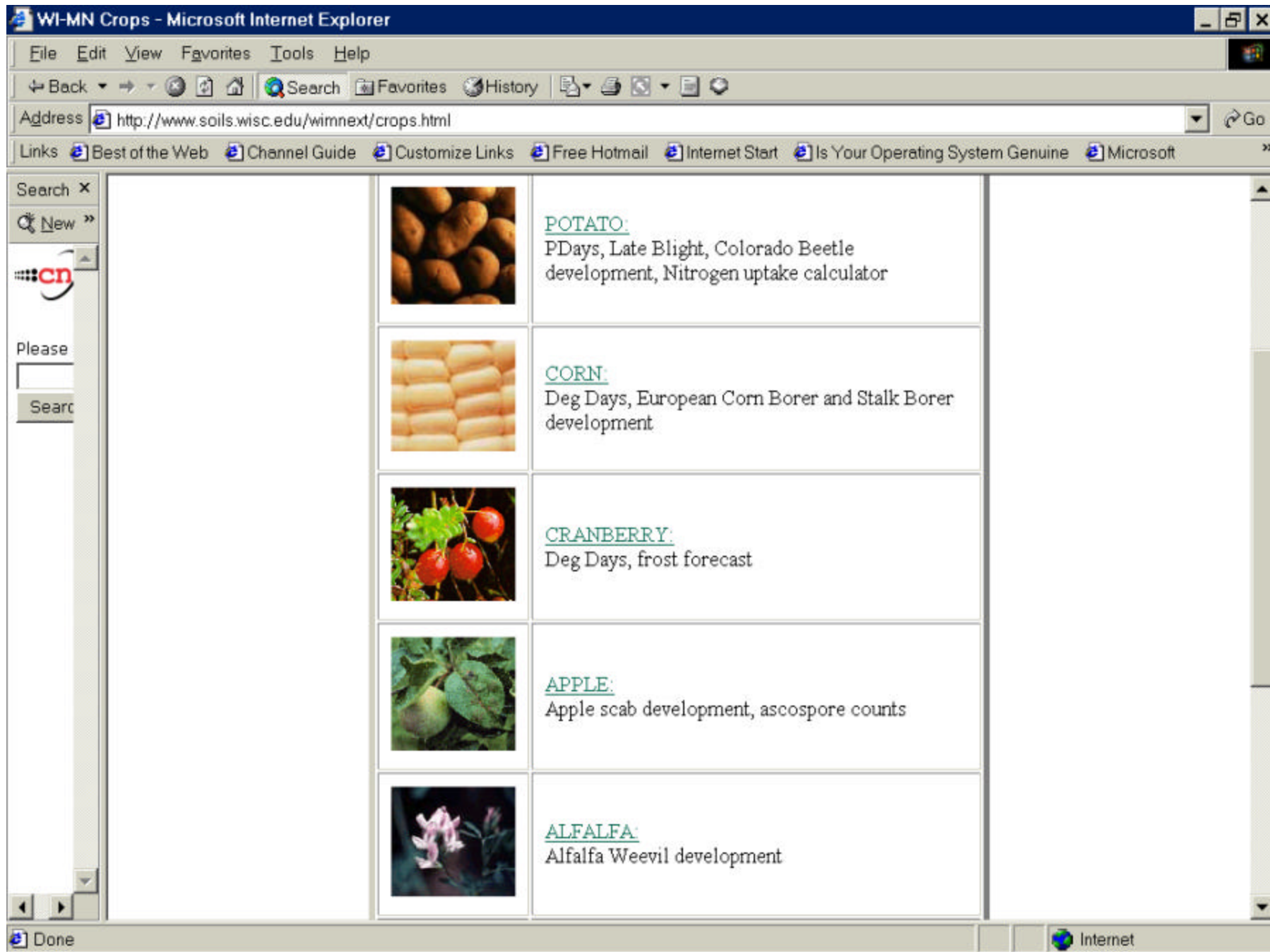
WI-MN Cooperative Extension Agricultural Weather

HOME WEATHER SUN WATER CROPS NITROGEN

Environmentally sound agricultural management practices are increasingly information driven. As new approaches become available, however, not all of the information required for their use is readily available. Information presented here is to meet this need for agricultural managers in Wisconsin, Minnesota, and Ohio. We hope that what you are looking for is contained in one of the pages listed below.

WEATHER	Access to AWON, ASOS, AWOS and Cooperative Observer weather observations
SUN	Solar radiation over the United States and South America
WATER	Evapotranspiration estimates for irrigation scheduling in Minnesota, Wisconsin, Michigan and Ohio.
CROPS	An array of crop-specific products.
NITROGEN	An array of fertilizer management products.

Internet



UW-Madison Departmental Sites

*Soil Science, Agronomy, Plant Pathology,
Entomology, Horticulture, Biosystems
Engineering, etc.*

- Faculty/Staff
- Departmental Activities/Newsletters
- Departmental Programs
- Academic Programs (graduate and undergraduate)
- Course Offerings

Wisconsin Department of Agriculture, Trade & Consumer Protection - Home - Microsoft Internet Explorer

File Edit View Favorites Tools Help

Back

Forward

Stop

Home

Search

Favorites

History

Print

Mail

Run

Find

Address <http://datcp.state.wi.us/index.jsp> Edit with Microsoft FrontPage Go

Links [Best of the Web](#) [Channel Guide](#) [Customize Links](#) [Free Hotmail](#) [Internet Start](#) [Is Your Operating System Genuine](#) [Microsoft](#)

Search X

New »



Please

Search

HOME | SITE MAP | ABOUT US | CONTACTS

Agriculture, Trade and Consumer Protection

Wisconsin Department of



Search

Agriculture

Business

Consumer Protection

Environment

Regulations



In the News

January 15, 2003

Worst Woes of '02

Telecommunications was the biggest thorn in Wisconsin consumers' side in 2002 -- again. For the third year running, the phone industry generated more complaints to the Bureau of Consumer Protection than any other business.

Other staples of modern life -- computers, credit cards, car repairs, investment schemes -- came in for their share of blame, too. [Read more >>](#)

Story Briefs

Looking for new market opportunities? Sign up for conference in Eau Claire, Jan. 24, 25. [Read more >>](#)

Sign up by Feb. 1 for the Landscape Portfolio

QUICK LINKS

- [Press Releases](#)
- [Meeting Notices](#)
- [Food Safety Alerts](#)
- [File Consumer Complaint](#)
- [Hotlines](#)
- [Licenses, Permits, Certifications](#)

DO NOT CALL!

[Consumer Sign Up and telemarketer information on Wisconsin's No Call List](#)

SITE FEATURE



CWD UPDATES

MARKET NEWS

Weekly review of

Internet


Cooperative Pest Survey Bulletin - Department of Agriculture, Trade & Consumer Protection - Microsoft Internet Explorer

File Edit View Favorites Tools Help

Back Forward Stop Reload Home Search Favorites History Print Copy Paste Address http://datcp.state.wi.us/arm/environment/insects/pest-bulletin/ Go

Links Best of the Web Channel Guide Customize Links Free Hotmail Internet Start Is Your Operating System Genuine Microsoft

Search X New




Please Search

HOME | SITE MAP | ABOUT US | CONTACTS

Agriculture, Trade and Consumer Protection

Wisconsin Department of



banner

Search

Agriculture

Business

Consumer Protection

Environment

Regulations



Cooperative Pest Survey Bulletin

Published weekly during the growing season, the Cooperative Pest Survey Bulletin offers pest alerts, information on insect and disease distribution and development, weather data and pest-related news from regulatory agencies. It covers agronomic and horticultural crops, nurseries, Christmas trees, honey bees, ginseng and the Gypsy Moth program in Wisconsin.

Current Issue

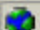
[November 15](#) - 12 page PDF, 644 KB

Highlights include: *Corn rootworm, European cornborer, Christmas tree and gypsy moth summaries, and much more! The year-end extravaganza.* Please note- this issue is very large, and may take some time to download.

[November 15](#), text-only- 6 pages, 106 KB

Previous Issues

[October 3](#) - 6 page PDF, 268KB

 Internet

Agriculture, Trade and Consumer Protection

Wisconsin
Department of Search

Agriculture

Business

Consumer
Protection

Environment

Regulations

Agriculture

[Animals](#) [Crops](#) [Land & Water](#) [Agriculture Resources](#) [Farm Center](#)

Agricultural Clean Sweep

Ag Clean Sweep organizes the collection of unwanted or unused pesticides and farm chemicals from farmers, businesses, rural households, schools and government agencies. This service is free to farmers and at a reduced price to other eligible users.

Since 1990, Ag Clean Sweeps have collected more than 1.5 million pounds of pesticides and waste chemicals.

Farms

Anyone who has grown or is growing agricultural commodities is eligible, including owners/tenants of abandoned farms. Most farmers receive Ag Clean Sweep disposal services free of charge.

Households

Household clean sweeps are often held at the same time as ag clean sweeps. Households receive Clean Sweep disposal services at no charge.

Businesses

Businesses include private schools, retail and wholesale sellers, agricultural co-ops, landscape companies, and a wide range of



Search[Agriculture](#)[Business](#)[Consumer Protection](#)[Environment](#)[Regulations](#)

Agriculture

[Animals](#)[Crops](#)[Land & Water](#)[Agriculture Resources](#)[Farm Center](#)

Pesticide Databases

Search for registered pesticide products, the companies that sell and use pesticides and the people that apply them.

[Pesticide Registration](#)

Search the database by company name, product name, target pest, active ingredient, EPA registration number, pesticide type, site or crop, formulation type, and restricted use products.

[Licensed Restricted Use Pesticide \(RUP\) Dealers](#)

Businesses that sell restricted use pesticides must be licensed. Search by dealer name, license number or by city, county or zip code.

[Licensed Pesticide Business Location \(PBL\)](#)

Businesses that apply pesticides must be licensed. Search by company name, license number or by city, county or zip code.

[Certified Pesticide Applicators](#)

People who are paid to apply pesticides, or those who work for a pesticide application business or farmers that wish to use restricted use pesticides, must be certified.

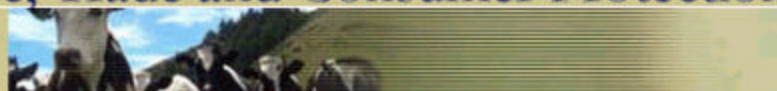
[Legal Notices](#)[Privacy Notice](#)[Acceptable Use Policy](#)

Department of Agriculture, Trade & Consumer Protection
2844 Agriculture Drive, Madison, WI 53718



Agriculture, Trade and Consumer Protection

Wisconsin
Department of

 Search[Agriculture](#)[Business](#)[Consumer
Protection](#)[Environment](#)[Regulations](#)

Agriculture

[Animals](#)[Crops](#)[Land & Water](#)[Agriculture Resources](#)[Farm Center](#)

Nutrient Management

Nutrient management properly credits on-farm manure and legumes as sources of nitrogen and phosphorus. This practice can help reduce commercial fertilizer expenses, which can potentially increase farm profitability.

[Nutrient Management Planning](#)

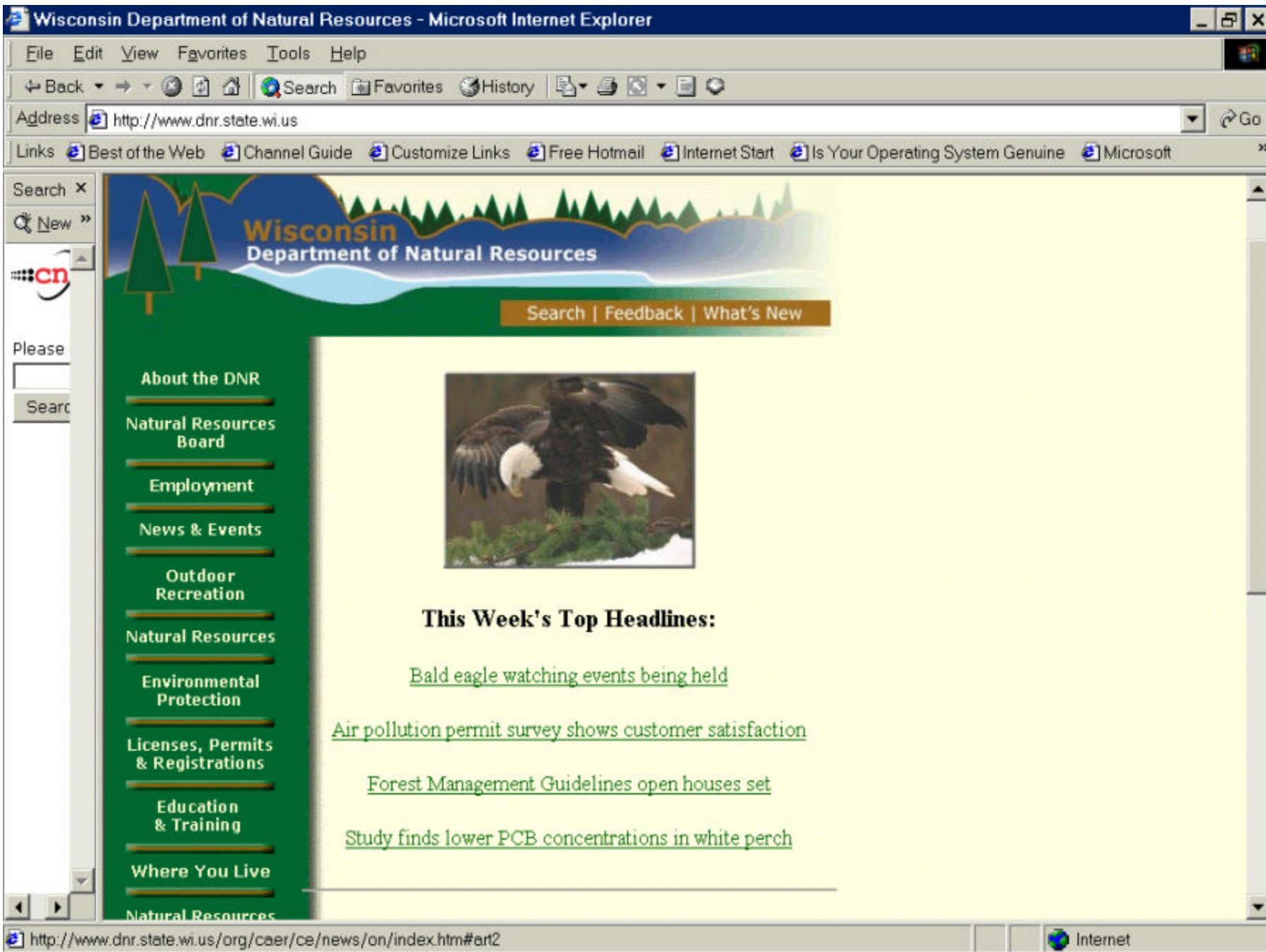
Find nutrient management planning forms and other information to help in the planning process, either for farmers or certified planners.

[Other Resources](#)

Find local, state and federal agencies that provide information on nutrient management planning.

Facts About Plant Nutrients

- Phosphorus (P) and nitrogen (N) are essential nutrients



WDNR - Environmental Protection- Water - Microsoft Internet Explorer

File Edit View Favorites Tools Help

Back Forward Stop Reload Home Search Favorites History Print Copy Paste

Address <http://www.dnr.state.wi.us/environmentprotect/water.html> Go

Links Best of the Web Channel Guide Customize Links Free Hotmail Internet Start Is Your Operating System Genuine Microsoft

Search X New »

cn

Please

Search

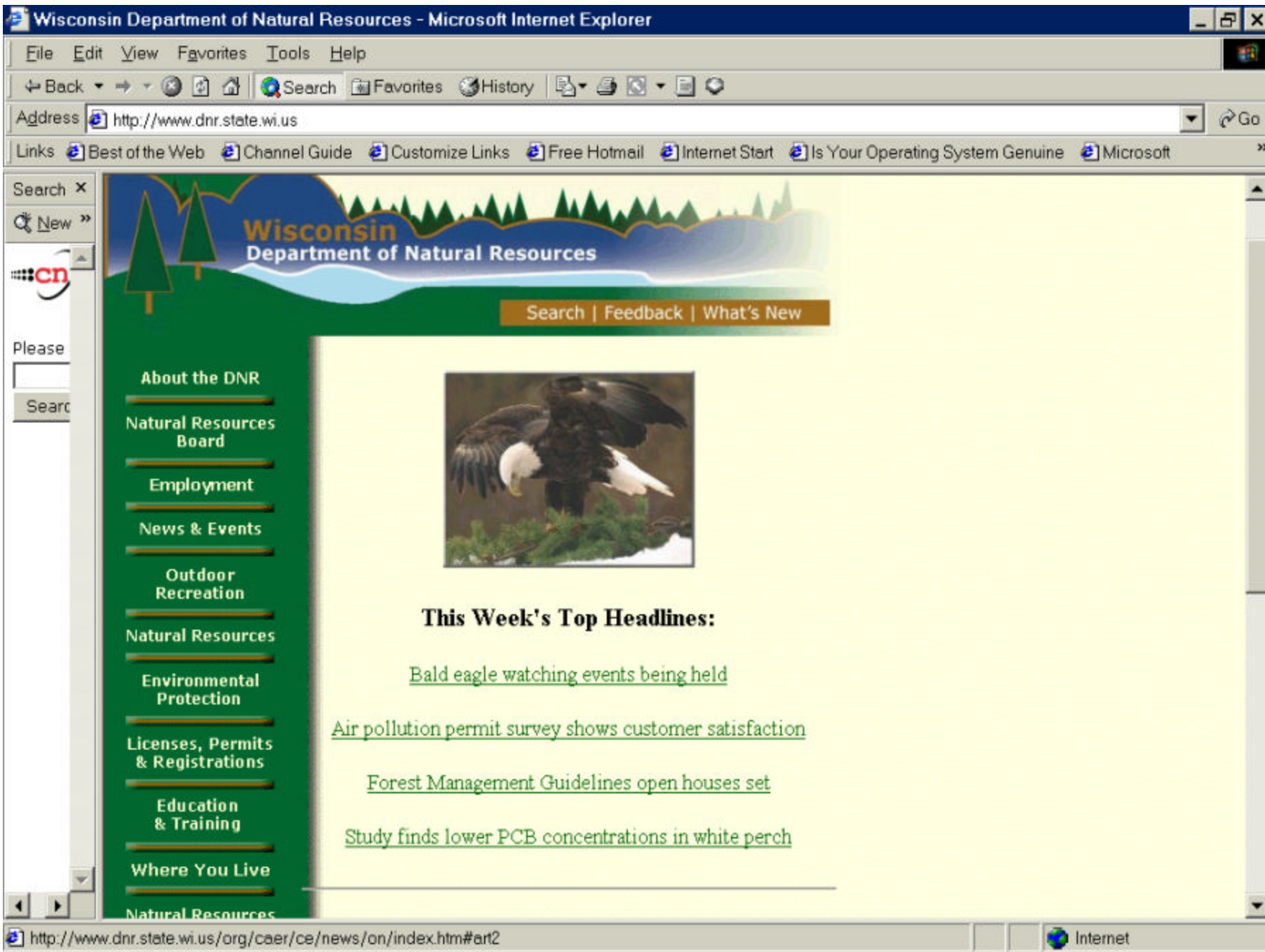
Protection

- Air
- Land
- Water
- GMU/Basins
- Waste
- Environmental Cleanup
- Law Enforcement
- Regulation & Licensing

Division of Water

- [Drinking Water and Groundwater](#)
- [Fisheries Management and Habitat Protection](#)
 - [Fish Wisconsin](#)
 - [Lake Michigan Fishing](#)
 - [Lakes Partnership-Lake Information](#)
 - [Waterway and Wetland Permits](#)
 - [Wetlands](#)
- [Watershed Management](#)
 - [Great Lakes and Watershed Planning Section](#)
 - [Sewer Service Area Planning](#)
 - [Lower Fox River Project](#)
 - [Wastewater Systems Plan Review](#)
 - [Water Quality Standards and Policy Section](#)
 - [Impaired Waters \(303d\)Program](#)
 - [Contaminated Sediments](#)
 - [Runoff Management](#)
 - [Dam Safety, Floodplain, Shoreland Section](#)
 - [WPDES Permits \(Wastewater Discharges\)](#)

Internet



WDNR - Environmental Protection- Water - Microsoft Internet Explorer

File Edit View Favorites Tools Help

Back Forward Stop Home Search Favorites History Print Copy Paste

Address <http://www.dnr.state.wi.us/environmentprotect/water.html> Go

Links Best of the Web Channel Guide Customize Links Free Hotmail Internet Start Is Your Operating System Genuine Microsoft

Search X

New »

cn

Please

Search

Protection

- Air
- Land
- Water
- GMU/Basins
- Waste
- Environmental Cleanup
- Law Enforcement
- Regulation & Licensing

Division of Water

- [Drinking Water and Groundwater](#)
- [Fisheries Management and Habitat Protection](#)
 - [Fish Wisconsin](#)
 - [Lake Michigan Fishing](#)
 - [Lakes Partnership-Lake Information](#)
 - [Waterway and Wetland Permits](#)
 - [Wetlands](#)
- [Watershed Management](#)
 - [Great Lakes and Watershed Planning Section](#)
 - [Sewer Service Area Planning](#)
 - [Lower Fox River Project](#)
 - [Wastewater Systems Plan Review](#)
 - [Water Quality Standards and Policy Section](#)
 - [Impaired Waters \(303d\)Program](#)
 - [Contaminated Sediments](#)
 - [Runoff Management](#)
 - [Dam Safety, Floodplain, Shoreland Section](#)
 - [WPDES Permits \(Wastewater Discharges\)](#)

Internet




Soils Homepage | NRCS WI - Microsoft Internet Explorer

File Edit View Favorites Tools Help

Back Forward Stop Home Search Favorites History Print

Address <http://www.wi.nrcs.usda.gov/soil/soils.asp> Go

Links Best of the Web Channel Guide Customize Links Free Hotmail Internet Start Is Your Operating System Genuine Microsoft

Search New  Please Search

Programs

- Tech Service Provider
- Conservation Security
- Conservation Advice
- Compliance
- Farmland Protection
- EQIP
- Wildlife
- RC&D
- Wetlands Reserve
- Grazing
- Conservation Reserve
- Plant Resources

About Us


- Who, What & Why
- People/Office
- Search
- Jobs & Internships
- Join The Earth Team
- Employee Resources
- Training
- Directives

Site Search ?

- › Digitizing modern soil surveys
- › Developing soil property and interpretive data
- › Completing scientific soils studies
- › Assisting with the use of soil data

Soil Data and Maps

- › [State General Soil Map \(STATSGO\)](#) . Data description and download. Sample maps.
- › [Digitized Soil Maps \(SSURGO\)](#) Digitizing status, data description and download. Sample maps.
- › [Soil Attribute Data for GIS Use](#) For information on Wisconsin data for GIS use, contact carl.wacker@wi.usda.gov.
- › [Tabular Soil Data](#) Soil attribute data, description and download.
- › To obtain paper copies of **soil maps and information** for specific local areas, contact the [local NRCS office](#).



- › [Bedrock](#)
- › [Prime Farmland](#)
- › [Gravel Source Areas](#)
- › [Hydric Soils](#)
- › [Major Land Resource Areas](#)
- › [Soil Survey Mapping Status](#)
- › [Digitizing Status Map](#)

Internet

USDA Natural Resources Conservation Service - Wisconsin - Microsoft Internet Explorer

File Edit View Favorites Tools Help

Back Forward Stop Home Search Favorites History Print Copy Paste

Address <http://www.wi.nrcs.usda.gov/tsp/techpro.asp> Go

Links Best of the Web Channel Guide Customize Links Free Hotmail Internet Start Is Your Operating System Genuine Microsoft

Search X

New >>

cn

Please

Search

Wisconsin NRCS

News Room

Press Releases
Email News
Service
What's News
Success Stories
Publications
National News

Technology

Soils
Engineering
Nat'l Res. Inventory
eFOTG-WI
eFOTG Notices
Job Sheets
Technical Notes

Programs

Tech Service
Provider
Conservation
Security
Conservation

**Conserving Natural Resources
Preserving the Future**

News Room | Technology | Programs | About Us
[Home](#) --> [Technology](#) --> Technical Service Providers

Technical Service Providers

Wisconsin's Technical Service Provider (TSP) program is intended to help professionals interested in providing technical assistance to landowners and farmers under one of the 2002 Farm Bill conservation programs.

[Draft TSP rules](#) rules have been published in the Federal Register, and are open for public comment until March 1, 2003. Final rules and implementation expected by April, 2003.

A presentation is available covering the draft Technical Service Providers Plan in Wisconsin.

 [Power Point TSP Presentation](#) Draft. [Requires PowerPoint Viewer] 496K
 [TSP Presentation in Adobe PDF Format](#). Draft. 480K

Technical Service Providers



Why become a certified Technical Service Provider?

Certification is required to be reimbursed for technical assistance to landowners and

Internet