

Occasional Invaders

“The insect that came in from the cold”

Phil Pellitteri

UW Insect Diagnostic Lab

Lady beetle overload!!!



Reasons for problems

- Outdoor plantings/ landscape
- Attracted by security lighting at night
- Attracted for shelter -water, shade
(spend winter rent free)
- Pure accident

Control

- Proper identification will solve the "why"
- Timing is everything- **TREATMENT WINDOW**
- Long term solutions will be physical
 - Proofing = building out or exclusion
 - Change of land use

Summer invaders

- Migrate in from trees , shrubs or other plant material- including prairies, old fields, CRP
- Attracted to lights at night
- Harmless but can create a big nuisance

Light attracted insects



- Warm humid nights
- Some are very seasonal
- Many are aquatic
- Seek shelter during day
- Sodium vapor and light placement best controls



Ground beetle- Family Carabidae



Photo F. Kohler





Caddis flies (aquatic insects)

Nuisance weevils

- Migrate in during summer
- Are slow moving and harmless
- Associated with outdoor plants -most breed in soil on roots



Imported Longhorned weevil





Imported long-horned weevils



©MARLIN E. RICE

Strawberry root weevil







Clover mites



Fall invaders

- Insects seek shelter to spend the winter
- Caulking, screening and other physical methods are best long term solution
- Select sprays that will be effective in cool temperatures- (pyrethroids)

Cluster flies





Cluster files= 'Winter flies'

Cluster flies-Sept. 15



C. Jones, USDA, ARS

- Breed on earthworms
- Not a problem during dry years



Boxelder bugs





Box elder bugs



- High populations during dry summers
- Feed and breed on boxelder and silver maple





Hackberry Psyllid



Nipple galls on leaves



Psyllid adult

Western Conifer Seed bug



Millipedes



Millipedes

- Two pairs of legs or every segment
- Mostly round, cylindrical bodies









Asian Lady beetles



Good beetle, nasty habit

- In Asia, they over winter in cracks and crevices of rock faces and cliffs
- In America, where rock faces and cliffs are not readily available, they congregate and over winter in houses and other man made structures

Asian Lady Beetle

- Migrate in during sunny days in October
- Triggered by cold spell, then warm sunny day-Do not breed indoors
- South and West side, light colors,-verticle contrasts

For Pest Control
Safe & Effective!

PEST NO MORE™

SCIENTIFIC

Asian Beetle Trap

NO POISONS

INSECT
RESEARCH
BASED

Kills
Insects
Naturally!

- Guaranteed Safe Near Children & Pets
- Easy-To-Use

Non-Toxic,
Recyclable

• Lasts 3 Months



Contains

Asian Beetle Trap



Treating fall invaders



- Treat overhangs ,
around window and
door frames
- South and West sides
at Minimum



Use pyrethroids

- Permethrin
- Bifenthrin
- Cypermethrin
- Cyfluthrin
- Lambda-cyhalothrin
- Deltamethrin

Barrier treatments

- Treat along foundation - out 3-5 ft and up along wall for 2-3 ft.
- For millipedes, weevils consider barrier out at end of mowed area- next to source



Indoor nest----Blow **dust** at entrance





Earwigs- Dermaptera

- Night active
- Feed on plants and insects
- Proofing
- Look out in damp springs
- Active 1st week of June

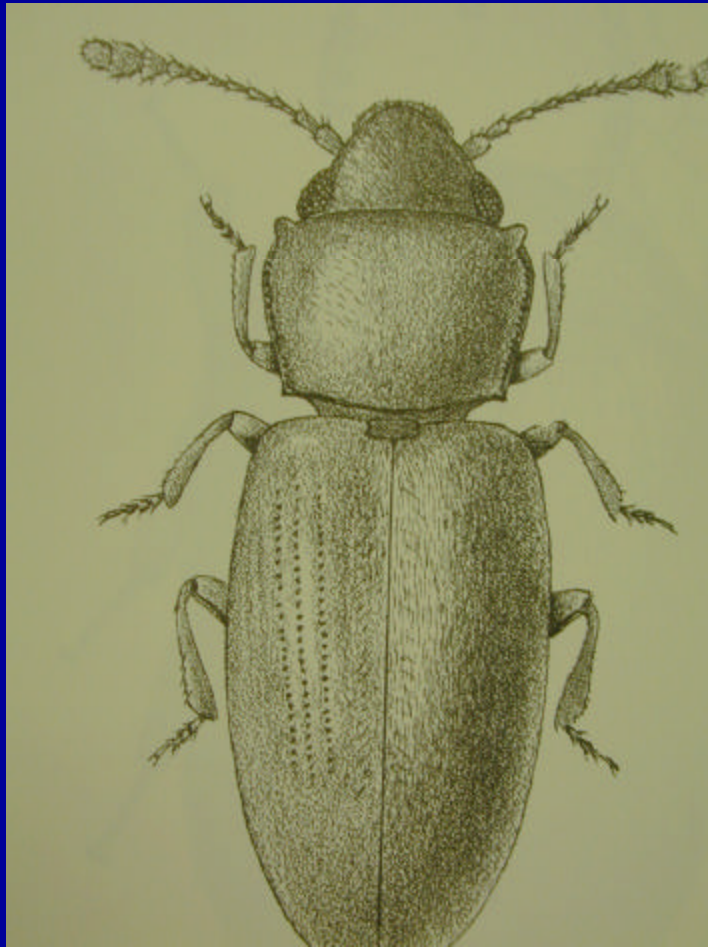




Springtails



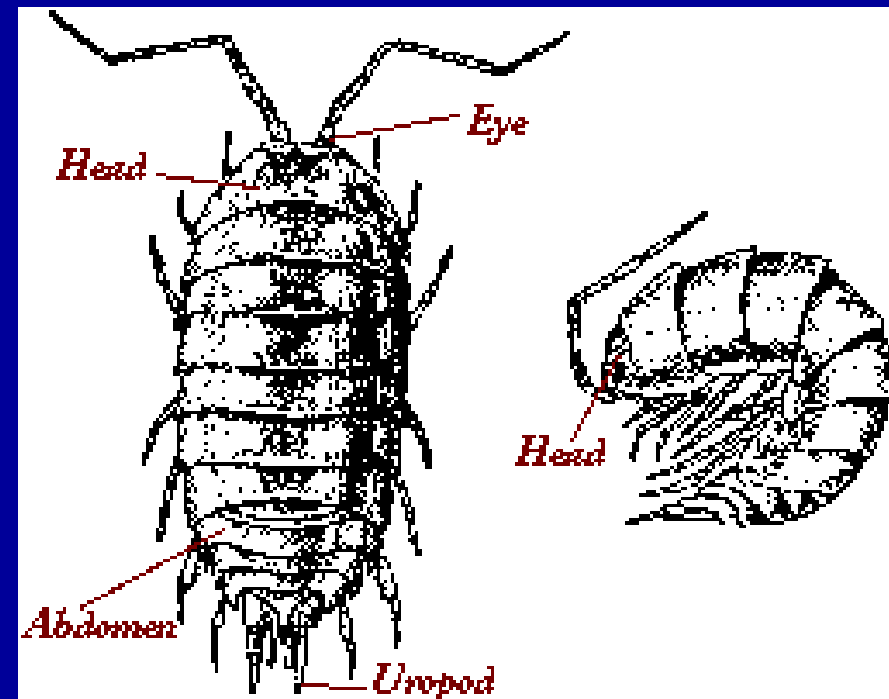
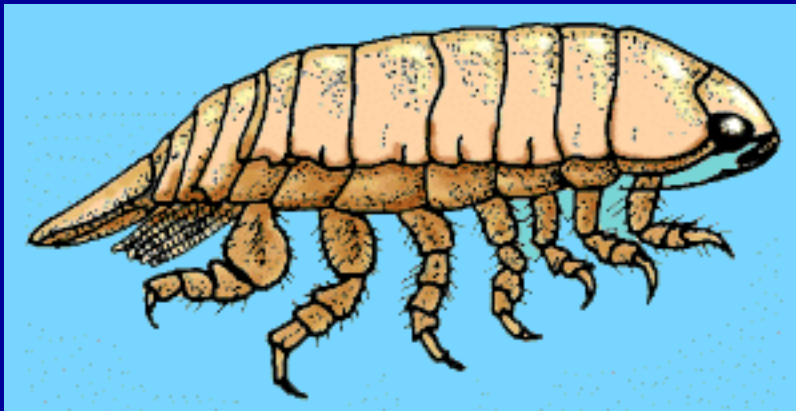
Foreign grain beetles





Isopods

- Sowbugs and pillbugs



This sow bug rolls up as pictured on the right. In contrast, pill bugs roll up into tight balls where the legs and head are not visible and look like a solid ball (with small ridges).